

Farm for Sale

Busey Farm Brokerage



Farm for Sale

C. Stephen Moore Farm—Christian County 80.00 Taxable acres in Stonington Township

Location

This farm is located 1.0 mile North of Stonington Illinois, and is accessed via CR 2100 North on the south and CR 1800 East on the eastern boundary of the farm.

Legal Description

The South Half (S1/2) of the Southeast Quarter (SE 1/4) located in Section 16, Township 14 North, Range 1 West of the Third Principal Meridian in Christian County, Illinois.

Listing Price

80.00 Acres @ \$ 11,800 /acre = \$ 944,000.00

Lease/Possession

The lease for this farm is currently open for 2021.

Contact Information



Corey Zelhart, Listing Broker 217-425-8245 (Office)
corey.zelhart@busey.com 217-493-2712 (Cell)

Nick Suess, Broker 217-425-8279
Hans Carmien, Broker 217-425-8296
Alex Rhoda, Broker 217-425-8821
Steve Myers, Managing Broker 217-425-8340

busey.com

259 E. South Park—Decatur, IL 62523
Phone: 217-425-8340—Fax 217-362-2724

Disclaimer: The information contained in this brochure is considered accurate. It is subject to verification and no liability for errors or omissions is assumed. There are no warranties, expressed or implied, as to the information herein contained, and it is recommended that an independent inspection of the property be made by all buyers.
Agency: Busey Farm Brokerage, a division of Busey Bank, its agents and representatives, are agents of the Seller

Christian County FSA Data

Farm # 5637		Tract # 7424	
Total Acres:	79.62	Cropland Acres:	79.62
Corn Base Acres:	40.1	Soy Base Acres:	39.4
Farm Program:	PLC-Corn/ARC County-Beans		

Price Loss Coverage (PLC) Yields

Corn Yield: 194 **Soybean Yield:** 58

Real Estate Tax Information

Parcel ID #	Acres	2019 Assessed Value	2019 Taxes Payable 2020
16-09-16-400-003-00	80.0	\$ 46,856.00	\$3,259.12

Yield History

	Corn	Soybeans
2019	210	60
2018	266	91
2017	242	80
2016	238	71
2015	217	70

2019 Soil Test Data

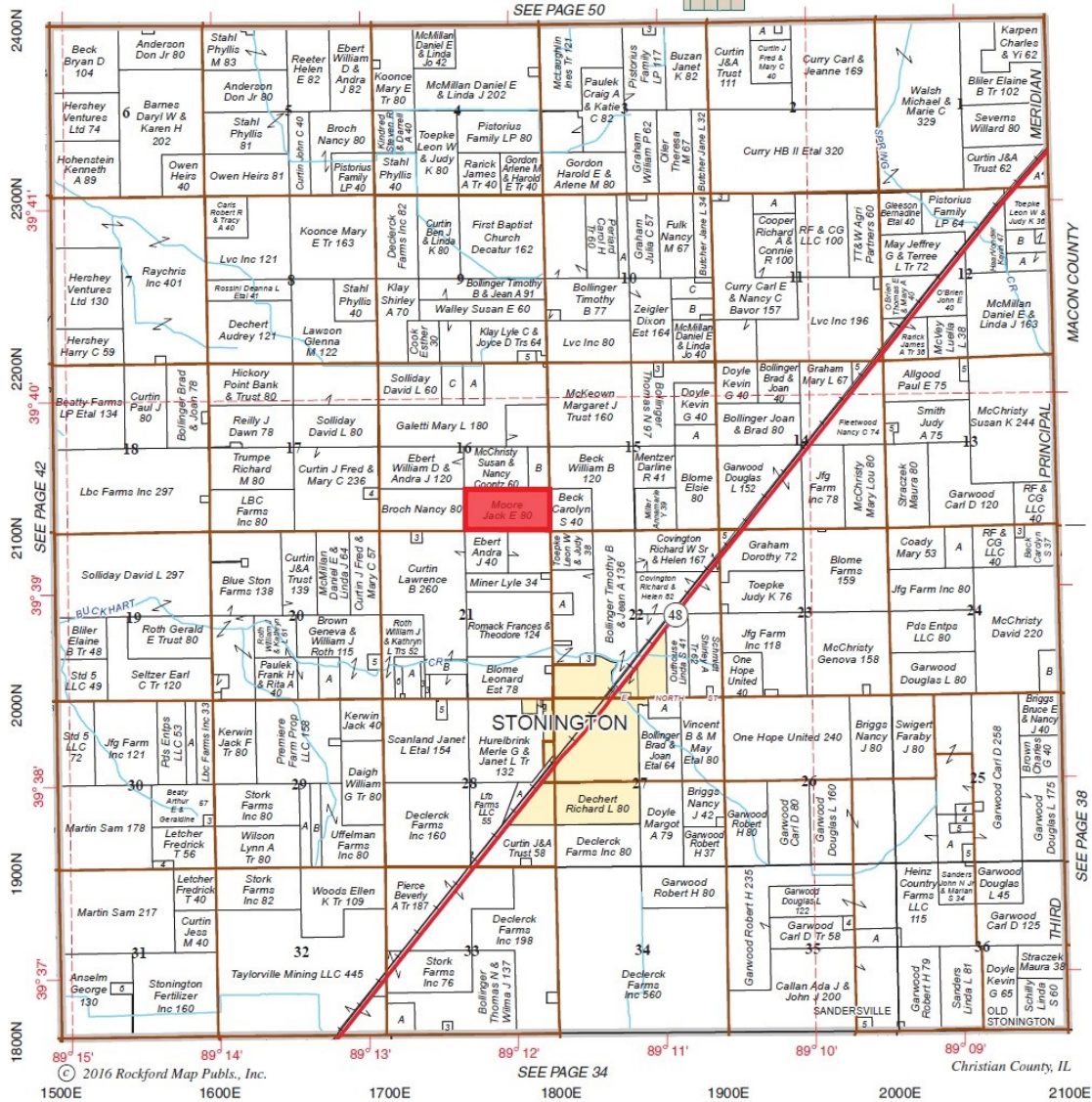
pH: 6.3 **P1:** 77 **K:** 446

Farm for Sale

Plat Map

STONINGTON

Refer to page 61 for keyed parcels
T.14N.-R.1W.



Reprinted with permission of Rockford Map Publishers, Inc.



Licensed Real Estate Broker Corporation

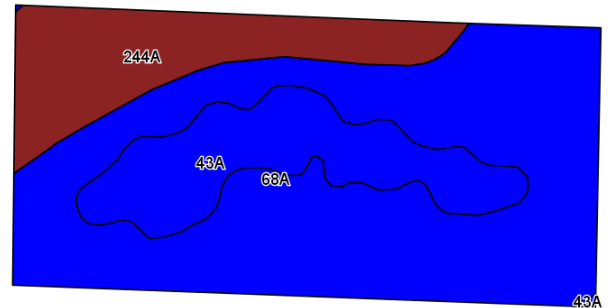
Corey Zelhart, Listing Broker
Nick Suess, Broker
Hans Carmien, Broker
Alex Rhoda, Broker
Steve Myers, Managing Broker

Phone 217-425-8245
Phone 217-425-8296
Phone 217-425-8279
Phone 217-425-8821
Phone 217-425-8340

Disclaimer: The information contained in this brochure is considered accurate. It is subject to verification and no liability for errors or omissions is assumed. There are no warranties, expressed or implied, as to the information herein contained, and it is recommended that an independent inspection of the property be made by all buyers.
Agency: Busey Farm Brokerage, a division of Busey Bank, its agents and representatives, are agents of the Seller

Farm for Sale

Aerial Map and Soil Information



©2015 AgriData, Inc.

Area Symbol: IL021, Soil Area Version: 9

Code	Soil Description	Acres	Percent of field	II. State Productivity Index Legend	Corn Bu/A	Soybeans Bu/A	Crop productivity index for optimum management
68A	Sable silty clay loam, 0 to 2 percent slopes	49.22	61.9%		192	63	143
244A	Hartsburg silty clay loam, 0 to 2 percent slopes	15.13	19.0%		182	59	134
43A	Ipava silt loam, 0 to 2 percent slopes	15.11	19.0%		191	62	142
Weighted Average					189.9	62	141.1



Licensed Real Estate Broker Corporation

Corey Zelhart, Listing Broker
Nick Suess, Broker
Hans Carmien, Broker
Alex Rhoda, Broker
Steve Myers, Managing Broker

Phone 217-425-8245
Phone 217-425-8296
Phone 217-425-8279
Phone 217-425-8821
Phone 217-425-8340

Disclaimer: The information contained in this brochure is considered accurate. It is subject to verification and no liability for errors or omissions is assumed. There are no warranties, expressed or implied, as to the information herein contained, and it is recommended that an independent inspection of the property be made by all buyers.
Agency: Busey Farm Brokerage, a division of Busey Bank, its agents and representatives, are agents of the Seller