

Farm for Sale

Busey Farm Brokerage



Farm for Sale

John Ullrich Foundation Farm

18.64 acres

Location

This farm is located approximately 2.5 miles northwest of Lovington in Lovington Township.

Legal Description

The E ½ of the SW ¼ of the SW ¼ of Sec. 20, T 15 N, R 1 E, of the 3rd P.M. located in the County of Moultrie, and State of Illinois, containing approximately 18.64 acres commonly known as the Ullrich Foundation

Listing Price

18.64 acres x \$9,500.00/acre = \$ 177,080.00

Lease/Possession

The lease for this farm is currently open for 2017.

Contact Information



Dean Kyburz, Managing Broker 217-425-8290
Corey Zelhart, Listing Broker 217-425-4245
Tom Courson, Broker 217-425-8291
Kyle Ogden, Broker 217-425-8279
Nick Suess, Broker 217-425-8296

busey.com

259 E. South Park—Decatur, IL 62523
Phone: 217-425-8340—Fax 217-362-2724

Moultrie County FSA Data

Farm #	4543	Tract #	4049
Total Acres:	18.64	Cropland Acres:	18.64
Corn Base Acres:	9.9	Wheat Base Acres	0.1
Soy Base Acres:	8.0	Oats Base Acres	0.5

Farm Program: ARC-County

Price Loss Coverage (PLC) Yields

Corn Yield:	139	Wheat Yield:	51
Soy Yield:	44	Oats Yield:	57

Real Estate Tax Information

Parcel ID #	Acres	2015 Assessed Value	2015 Taxes Payable 2016
02-02-20-000-301	18.5	\$9,293.00	\$659.00

Yield History

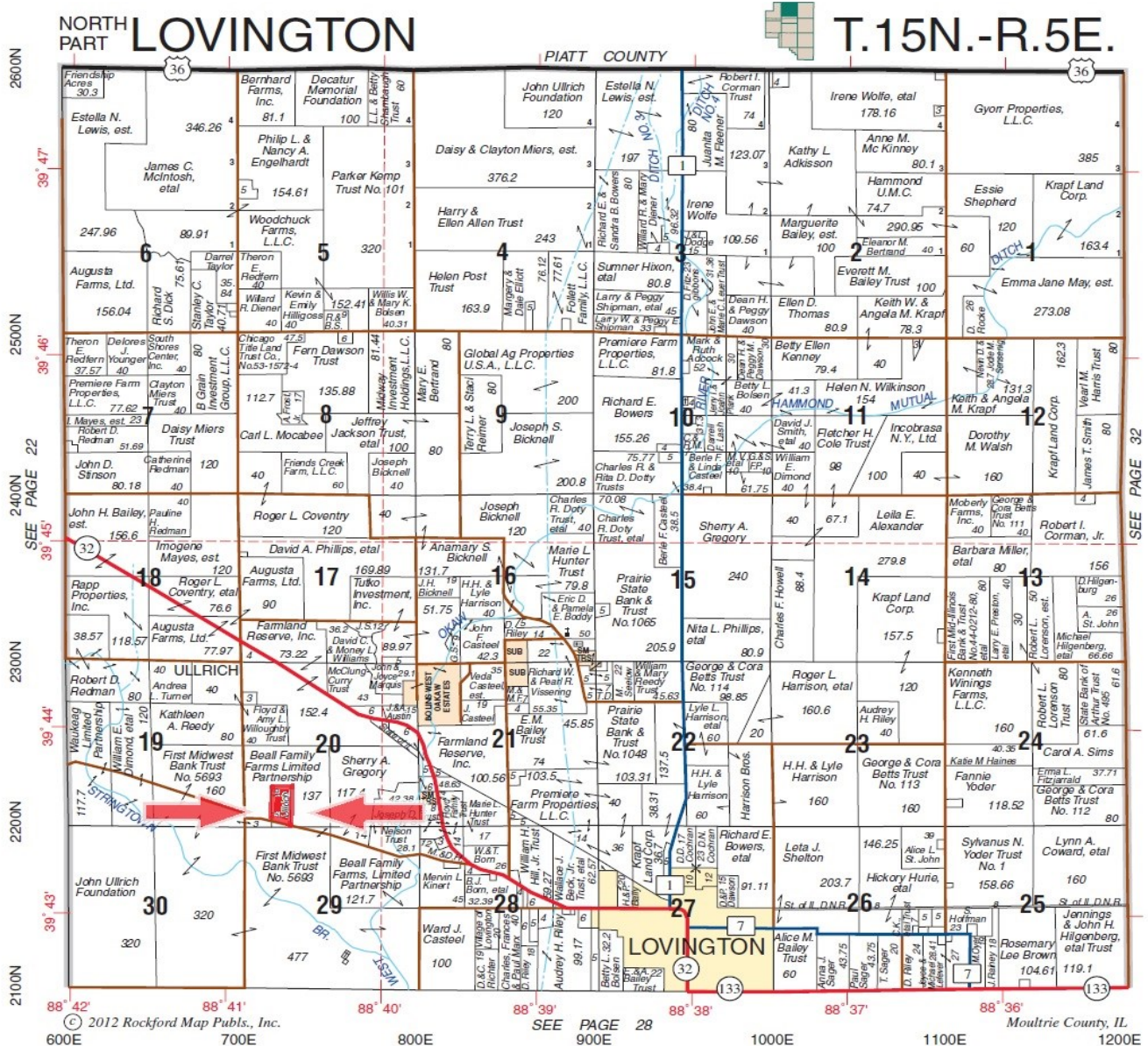
	Corn	Soybeans
2016	NA	72.86
2015	214.15	N/A
2014	NA	63.14

Disclaimer: The information contained in this brochure is considered accurate. It is subject to verification and no liability for errors or omissions is assumed. There are no warranties, expressed or implied, as to the information herein contained, and it is recommended that an independent inspection of the property be made by all buyers.

Agency: Busey Farm Brokerage, a division of Busey Bank, its agents and representatives, are agents of the Seller

Farm for Sale

Plat Map



Reprinted with permission of Rockford Map Publishers, Inc.



Licensed Real Estate Broker Corporation

Dean Kyburz, Managing Broker

Corey Zelhart, Listing Broker

Tom Courson, Broker

Kyle Ogden, Broker

Nick Suess, Broker

Phone 217-425-8290

Phone 217-425-8245

Phone 217-425-8291

Phone 217-425-8279

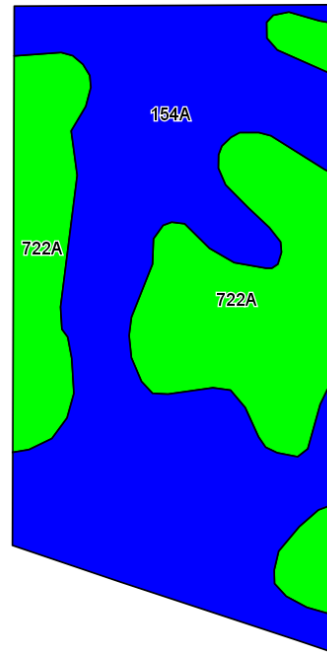
Phone 217-425-8296

Disclaimer: The information contained in this brochure is considered accurate. It is subject to verification and no liability for errors or omissions is assumed. There are no warranties, expressed or implied, as to the information herein contained, and it is recommended that an independent inspection of the property be made by all buyers.

Agency: Busey Farm Brokerage, a division of Busey Bank, its agents and representatives, are agents of the Seller

Farm for Sale

Aerial Map and Soil Information



©2015 AgriData, Inc.

Soil Code	Soil Description	Acres	Percent Tillable	Corn Bu/A	Soybean Bu/A	Crop Productivity Index for optimum management
154A	Flanagan Silt Loam	11.66	62.6 %	194	63	144
722A	Drummer Milford Silty Clay Loam	6.98	37.4%	184	60	137
Weighted Average		18.64		190.3	61.9	141.4



Licensed Real Estate Broker Corporation

Dean Kyburz, Managing Broker
Corey Zelhart, Listing Broker
Tom Courson, Broker
Kyle Ogden, Broker
Nick Suess, Broker

Phone 217-425-8290
Phone 217-425-8245
Phone 217-425-8291
Phone 217-425-8279
Phone 217-425-8296

Disclaimer: The information contained in this brochure is considered accurate. It is subject to verification and no liability for errors or omissions is assumed. There are no warranties, expressed or implied, as to the information herein contained, and it is recommended that an independent inspection of the property be made by all buyers.

Agency: Busey Farm Brokerage, a division of Busey Bank, its agents and representatives, are agents of the Seller