

Farm for Sale

Busey Farm Brokerage



Farm for Sale

Tyler Meriweather Trust Farm 120.51 acres

Location

This farm is located 3.0 miles east of Decatur Illinois in Long Creek Township.

Legal Description

The North Half (N 1/2) of the Southwest Quarter (SW 1/4) of Section 19, Township 16 North, Range 4 East of the Third Principal Meridian AND the Northeast Quarter (NE 1/4) of the Southeast Quarter (SE 1/4) of Section 24, Township 16 North, Range 3 East of the Third Principal Meridian in Macon County, Illinois.

Listing Price

120.51 acres x \$9,400.00/acre = \$ 1,132,794.00

Lease/Possession

The lease for this farm is currently open for 2018.

Contact Information



Corey Zelhart, Listing Broker 217-425-8245
Tom Courson, Broker 217-425-8291
Dean Kyburz, Broker 217-425-8290
Kyle Ogden, Broker 217-425-8279
Nick Suess, Broker 217-425-8296
Steve Myers, Managing Broker 217-425-8340

busey.com

259 E. South Park—Decatur, IL 62523
Phone: 217-425-8340—Fax 217-362-2724

Macon County FSA Data

Farm #	0842	Tract #	3077
Total Acres:	122.04	Cropland Acres:	120.44
Corn Base Acres:	59.1	Soy Base Acres	59.1

Farm Program: ARC-County

Price Loss Coverage (PLC) Yields

Corn Yield: 150 **Soybean Yield:** 45

Real Estate Tax Information

Parcel ID #	Acres	2016 Assessed	2016 Taxes Payable 2017
09-14-19-300-001	80.51	\$28,163.00	\$2,016.78
09-13-24-400-002	40.0	\$23,685.00	\$1,696.10

Yield History

	Corn	Soybeans
2016	200.0	66.0
2015	207.0	61.0
2014	217.0	68.0

2014 Soil Test Data

pH: 6.1 **P1:** 70 **K:** 349

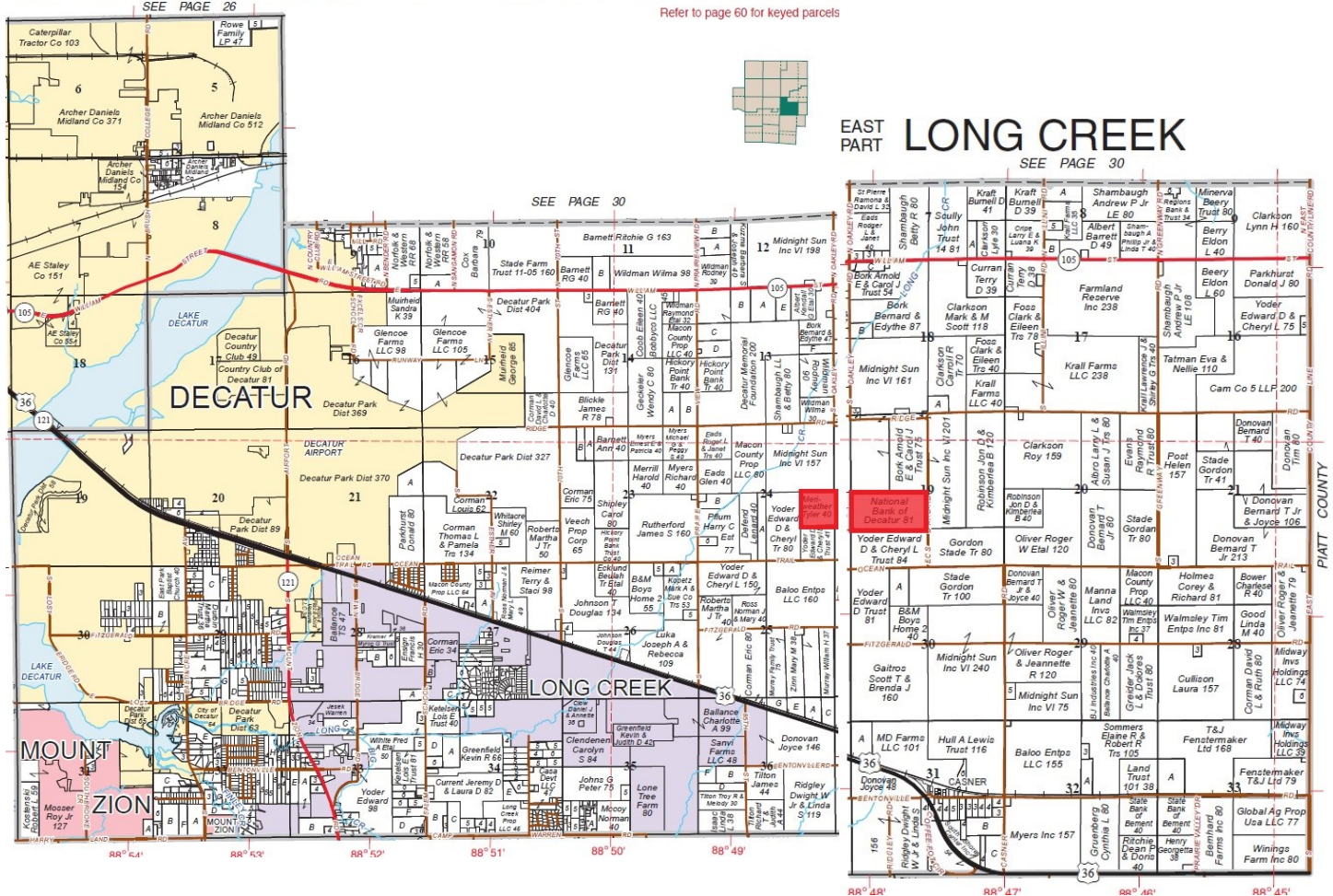
Disclaimer: The information contained in this brochure is considered accurate. It is subject to verification and no liability for errors or omissions is assumed. There are no warranties, expressed or implied, as to the information herein contained, and it is recommended that an independent inspection of the property be made by all buyers.

Agency: Busey Farm Brokerage, a division of Busey Bank, its agents and representatives, are agents of the Seller

Farm for Sale

Plat Map

WEST PART LONG CREEK NORTHEAST DECATUR T.16N.-R.3E.



Reprinted with permission of Rockford Map Publishers, Inc.

Busey FARM BROKERAGE

Licensed Real Estate Broker Corporation

Corey Zelhart, Listing Broker
Tom Courson, Broker
Dean Kyburz, Broker
Kyle Ogden, Broker
Nick Suess, Broker
Steve Myers, Managing Broker

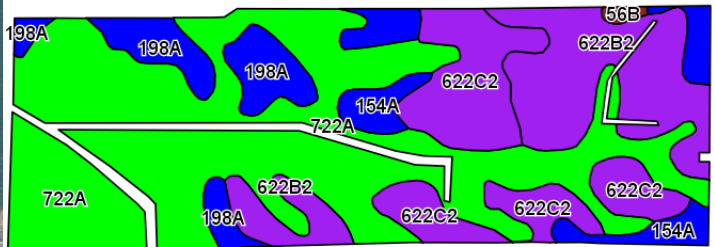
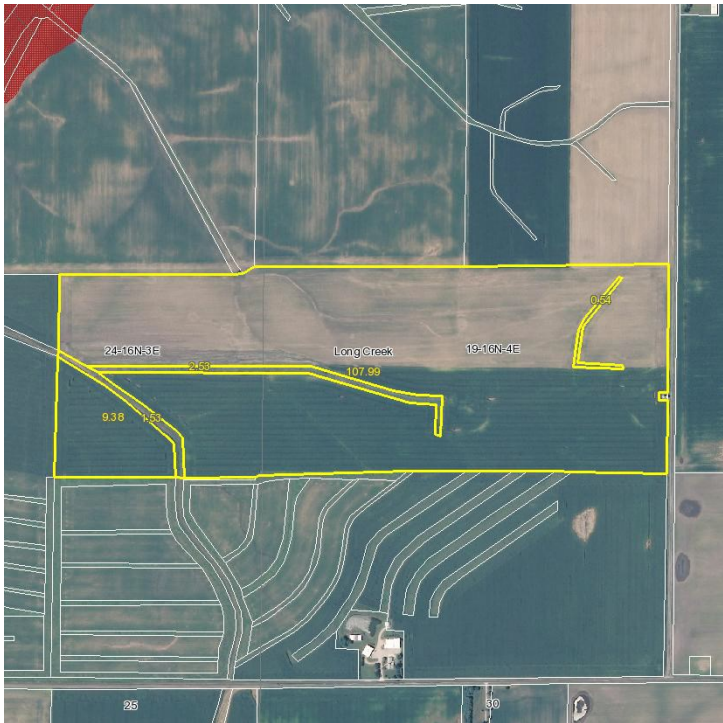
Phone 217-425-8245
Phone 217-425-8291
Phone 217-425-8245
Phone 217-425-8279
Phone 217-425-8296
Phone 217-425-8340

Disclaimer: The information contained in this brochure is considered accurate. It is subject to verification and no liability for errors or omissions is assumed. There are no warranties, expressed or implied, as to the information herein contained, and it is recommended that an independent inspection of the property be made by all buyers.

Agency: Busey Farm Brokerage, a division of Busey Bank, its agents and representatives, are agents of the Seller

Farm for Sale

Aerial Map and Soil Information



©2015 AgriData, Inc.

Area Symbol: IL115, Soil Area Version: 11							
Code	Soil Description	Acres	Percent of field	Il. State Productivity Index Legend	Com Bu/A	Soybeans Bu/A	Crop productivity index for optimum management
722A	Drummer-Milford silty clay loams, 0 to 2 percent slopes	60.64	51.7%		184	60	137
**622B2	Wyanet silt loam, 2 to 5 percent slopes, eroded	20.28	17.3%		**153	**50	**114
**622C2	Wyanet silt loam, 5 to 10 percent slopes, eroded	18.64	15.9%		**150	**49	**112
198A	Elburn silt loam, 0 to 2 percent slopes	9.35	8.0%		197	61	143
154A	Flanagan silt loam, 0 to 2 percent slopes	8.00	6.8%		194	63	144
**56B	Dana silt loam, 2 to 5 percent slopes	0.46	0.4%		**178	**55	**130
Weighted Average					174.3	56.8	130



Licensed Real Estate Broker Corporation

Corey Zelhart, Listing Broker
Tom Courson, Broker
Dean Kyburz, Broker
Kyle Ogden, Broker
Nick Suess, Broker
Steve Myers, Managing Broker

Phone 217-425-8245
Phone 217-425-8291
Phone 217-425-8245
Phone 217-425-8279
Phone 217-425-8296
Phone 217-425-8340

Disclaimer: The information contained in this brochure is considered accurate. It is subject to verification and no liability for errors or omissions is assumed. There are no warranties, expressed or implied, as to the information herein contained, and it is recommended that an independent inspection of the property be made by all buyers.

Agency: Busey Farm Brokerage, a division of Busey Bank, its agents and representatives, are agents of the Seller