

# Public Auction

Busey Farm Brokerage

**November 5, 2015 at 9:00 A.M.**

Best Western Plus  
917 Green Mill Road, Arcola, Illinois 61910



## COLES COUNTY – FARM FOR SALE BY AUCTION

**Okaw Valley Newby Farm** 30.00 +/- Acres

Second Offering - Two Tracts, Buyers Choice & Privilege

Sections 3 & 4, Humboldt (S) Township, Coles County, Illinois

### Location

Tracts 5 and 6 are located approximately 7 miles North of Charleston, Illinois and 1/2 mile East of Humboldt, Illinois. 1500 N & 900 E CR, Coles County, Illinois

### Legal Description

(Abbreviated)

20.2 +/- Acres located in the E 1/2 of the E 1/2 of the SE 1/4 and 6.28 +/- Acres located in the SE 1/4 of the SE 1/4 of the NE 1/4 of Section 4; also 3.5 +/- Acres located in the NW 1/4 of the NW 1/4 of the SW 1/4 of Section 3, T13N, R8E, Coles County, Illinois.

### Contract Information



Dean Kyburz Managing Broker 217-425-8291	Steve Myers Auctioneer/Broker Lic. #441-001837 309-962-2901 309-275-4402	Matt Rhodes Broker 217-351-6555 217-255-2018
--	--	---

[busey.com](http://busey.com)

3002 W. Windsor Rd., Champaign, IL 61822  
Phone: 217-353-7101 Fax: 217-351-2848

### Real Estate Tax Information

Tract	Parcel ID#	Acres	2014 Assessed Value	2014 Taxes Due in 2015
5	08-04-400-002	20.18	\$9,528	\$747.12
5	08-03-300-001	3.54	\$1,964	\$154.00
6	08-04-200-005	6.28	\$ 830	\$ 65.08

### Yield History

#### 5 Year Average

Tract	Corn	SB
5	150.7	57.1
6	Previously cropped in hay	

### Lease/Possession

The farm is leased for the 2015 crop year. Seller will be responsible for all income and expenses for the 2015 crop. The lease is open for the 2016 crop.

**Disclaimer:** The information contained in this brochure is considered accurate. It is subject to verification and no liability for errors or omissions is assumed. There are no warranties, expressed or implied, as to the information herein contained, and it is recommended that an independent inspection of the property be made by all buyers.

**Agency:** Busey Farm Brokerage, a division of Busey Bank, its agents and representatives, are agents of the Seller

# Farm Information

## Tract 5

### Coles County FSA Data

Farm #:	7382	Tract #	10043
Total Acres:	25.3	Tillable Acres:	24.6
Corn Base Acres:	6.0	Soybean Base Acres:	3.8
Wheat Base Acres:	None		
CRP:	None		

### PLC Yields

Corn Yield:	146	Soybean Yield:	51
Wheat Yield:	n/a		



## Tract 6

### Coles County FSA Data

Farm #:	7383	Tract #	10044
Total Acres:	6.26	Tillable Acres:	6.26
Corn Base Acres:	1.5	Soybean Base Acres:	None
Wheat Base Acres:	None		
CRP:	1.6 Ac. @ \$167.00/Acre – Exp. 2019		

### PLC Yields

Corn Yield:	146	Soybean Yield:	51
Wheat Yield:	n/a		

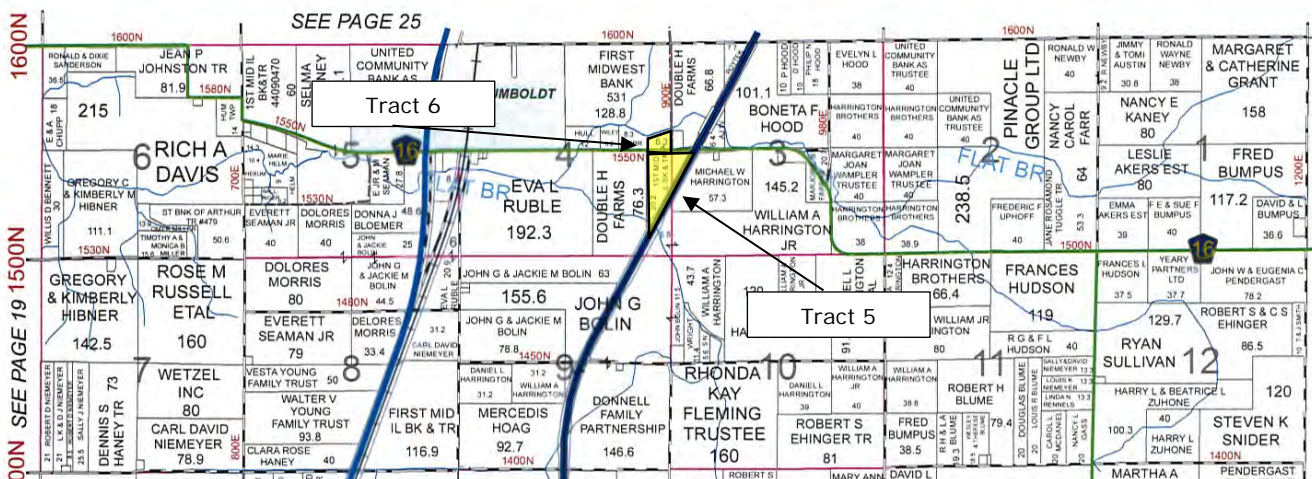


## 10. HUMBOLDT (S)

## T.13N.-R.8E.

Coles County Regional Planning & Development Commission

February 2012

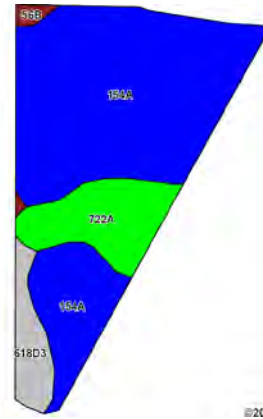


**Disclaimer:** The information contained in this brochure is considered accurate. It is subject to verification and no liability for errors or omissions is assumed. There are no warranties, expressed or implied, as to the information herein contained, and it is recommended that an independent inspection of the property be made by all buyers.

**Agency:** Busey Farm Brokerage, a division of Busey Bank, its agents and representatives, are agents of the Seller

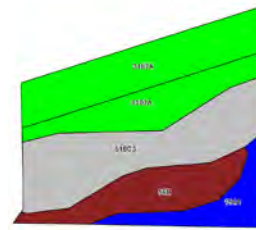
# Aerial Map and Soil Information

## Tracts 5



Soil Code	Soil Description	Approximate Acres	Percent of Field	Corn Bu/A	Soy Bu/A	Crop Productivity Index for optimum management
154A	Flanagan silt loam	18.37	75.8%	194	63	144
722A	Drummer-Milford silty clay loam	3.80	15.7%	184	60	137
618D3	Senachwine clay loam	1.75	7.2%	118	38	87
56B	Dana silt loam	0.32	1.3%	178	55	130
<b>Weighted Average</b>				<b>186.7</b>	<b>60.6</b>	<b>138.6</b>

## Tract 6



Soil Code	Soil Description	Approximate Acres	Percent of Field	Corn Bu/A	Soy Bu/A	Crop Productivity Index for optimum management
3107A	Sawmill silty clay loam	2.60	41.5%	189	60	139
618C3	Senachwine clay loam	1.99	31.8%	126	40	92
56B	Dana silt loam	1.02	16.3%	178	55	130
154A	Flanagan silt loam	0.65	10.4%	194	63	144
<b>Weighted Average</b>				<b>167.7</b>	<b>53.1</b>	<b>123.1</b>



Licensed Real Estate Broker Corporation

**Dean Kyburz, Managing Broker**

Phone: 217-425-8290

dean.kyburz@busey.com

**Steve Myers, Broker/Auctioneer**

Phone: 309-962-2901

Cell: 309-275-4402

steve.myers@busey.com

**Matt Rhodes, Listing Broker**

Phone: 217-351-6555

Cell: 217-255-2018

matt.rhodes@busey.com

**Disclaimer:** The information contained in this brochure is considered accurate. It is subject to verification and no liability for errors or omissions is assumed. There are no warranties, expressed or implied, as to the information herein contained, and it is recommended that an independent inspection of the property be made by all buyers.

**Agency:** Busey Farm Brokerage, a division of Busey Bank, its agents and representatives, are agents of the Seller



# Auction Terms and Conditions

**Procedures:** Tracts 5 & 6 will be offered in 2 individual tracts or in combination via the bidder's choice and privilege auction system. The high bidder in the first round of bidding can take their choice of one or any combination of tracts at the high bid amount. If a tract remains after high bidder's selection, the runner-up bidder can take any remaining parcels at the high bid amount. If any parcels are remaining, another round of bidding occurs until Tracts 5 & 6 are sold. All bidding will be on a dollars per acre basis and subject to Seller's acceptance.

**Down Payment:** 10% down payment due on the day of the auction, upon signing a contract to purchase. The down payment can be paid in cash or by personal check, corporate check, or cashier's check.

**Financing:** Keep in mind that YOUR BIDDING IS NOT CONDITIONAL UPON FINANCING, so be certain that you have arranged financing if you need it and are capable of paying cash on the day of the auction and at closing.

**Closing:** Closing will take place on or before December 15, 2015, or as soon thereafter as acceptable closing documents are completed.

**Possession:** Possession of the land will be given at closing. Note-Any personal property owned by the tenants and/or owners will be removed prior to the date of possession.

**Taxes:** The Seller shall credit the Buyer(s) at closing for the 2015 taxes payable in 2016, based on the most recent ascertainable tax figures. All subsequent years, shall be the responsibility of the Buyer(s).

**Income/Expenses:** The Seller/Tenant will retain all income attributable to the 2015 crop year and before, and will pay all expenses for the same.

**Acceptance of Bid Prices:** The successful bidder(s) will sign a contract to purchase immediately following the close of bidding at the auction. The final bid is subject to approval by the Seller, and Seller reserves the right to withdraw the property from sale at any time prior to receiving an acceptable bid.

**Title:** Seller will furnish the successful bidder(s) an Owner's Policy of Title Insurance in the amount of purchase price and will execute a recordable Trustee's Deed or Warranty Deed providing merchantable title conveying the real estate to the Buyer(s).

**Mineral Rights:** All mineral rights owned by the Seller will be transferred to the Buyer(s) at closing.

**Agency:** Matt Rhodes, Broker, and Steve Myers, Auctioneer, and Busey Farm Brokerage Services representatives are exclusive agents of the Seller.

**Easements and Leases:** Sale of said property is subject to any and all easements and leases of record.

**Disclaimer and Absence of Warranties:** The property is being sold on an "AS IS, WHERE IS, WITH ALL FAULTS" basis, and no warranty or representation, either express or implied, concerning the property is made by either the Seller or the Auction Company. The information contained in this brochure is believed to be accurate but is subject to verification by all parties relying on it. No liability for its accuracy, errors or omissions is assumed by the Seller or the Auction Company. Each bidder is responsible for conducting its own independent inspections, investigations, and all due diligence concerning the property and the auction and do so at their own risk. Neither the Seller nor the Auction Company are warranting and specific zoning classification, location of utilities, assurance of building permits, driveway permits or water or septic permits; nor warranting or representing as to fitness for a particular use access, water quantity or quality, or physical or environmental condition. Diagrams and dimensions in this brochure are approximate. All acres are estimates. All information contained in this brochure and any related materials are subject to the terms and conditions of sale outlined in the purchase contract. Auction conduct and bidding increments are at the sole direction and discretion of the auctioneer. All decisions of the auctioneer are final. The Seller and the Auction Company reserve the right to preclude anyone from bidding if there is a question as to the person's credentials, fitness, intent, etc. ANNOUNCEMENTS MADE BY THE AUCTIONEER AT THE TIME OF SALE WILL TAKE PRECEDENCE OVER ANY PREVIOUSLY PRINTED MATERIAL OR ANY OTHER ORAL STATEMENTS MADE.

**New Data, Corrections, and Changes:** Please arrive prior to the scheduled auction time to inspect any changes, corrections, or additions to the property information.

**Note:** Videotaping, photography, and/or announcements will be allowed on auction day ONLY with PRIOR approval from Steve Myers, Auctioneer.

**Disclaimer:** The information contained in this brochure is considered accurate. It is subject to verification and no liability for errors or omissions is assumed. There are no warranties, expressed or implied, as to the information herein contained, and it is recommended that an independent inspection of the property be made by all buyers.

**Agency:** Busey Farm Brokerage, a division of Busey Bank, its agents and representatives, are agents of the Seller