

Farm for Sale

Busey Farm Brokerage

SOLO!

Farm for Sale

Harris Trust Morrisonville Farm

83.39 acres

Location

This farm is located approximately four miles east of Morrisonville in Ricks Township.

Legal Description

The West half of the Northwest quarter of the fractional Section 1, Township 11 North, Range 3 West of the Third Principal Meridian (3PM), Christian County, Illinois.

Lease/Possession

The lease is open for 2017, possession at closing.

Contact Information



Dean Kyburz, Managing Broker 217-425-8290
Nick Suess, Listing Broker 217-425-8296
Tom Courson, Listing Broker 217-425-8291
Kyle Ogden, Broker 217-425-8279
Corey Zelhart, Broker 217-425-4245

busey.com

259 E. South Park—Decatur, IL 62523
Phone: 217-425-8340—Fax 217-362-2724

Listing Price

83.39 acres x \$10,900/acre = \$908,951.00

County FSA Data

Farm #	1264	Tract #	1268
--------	------	---------	------

Total Acres:	83.39	Cropland Acres:	83.27
--------------	-------	-----------------	-------

Corn Base Acres:	61.95	Soybean Base Acres:	20.65
------------------	-------	---------------------	-------

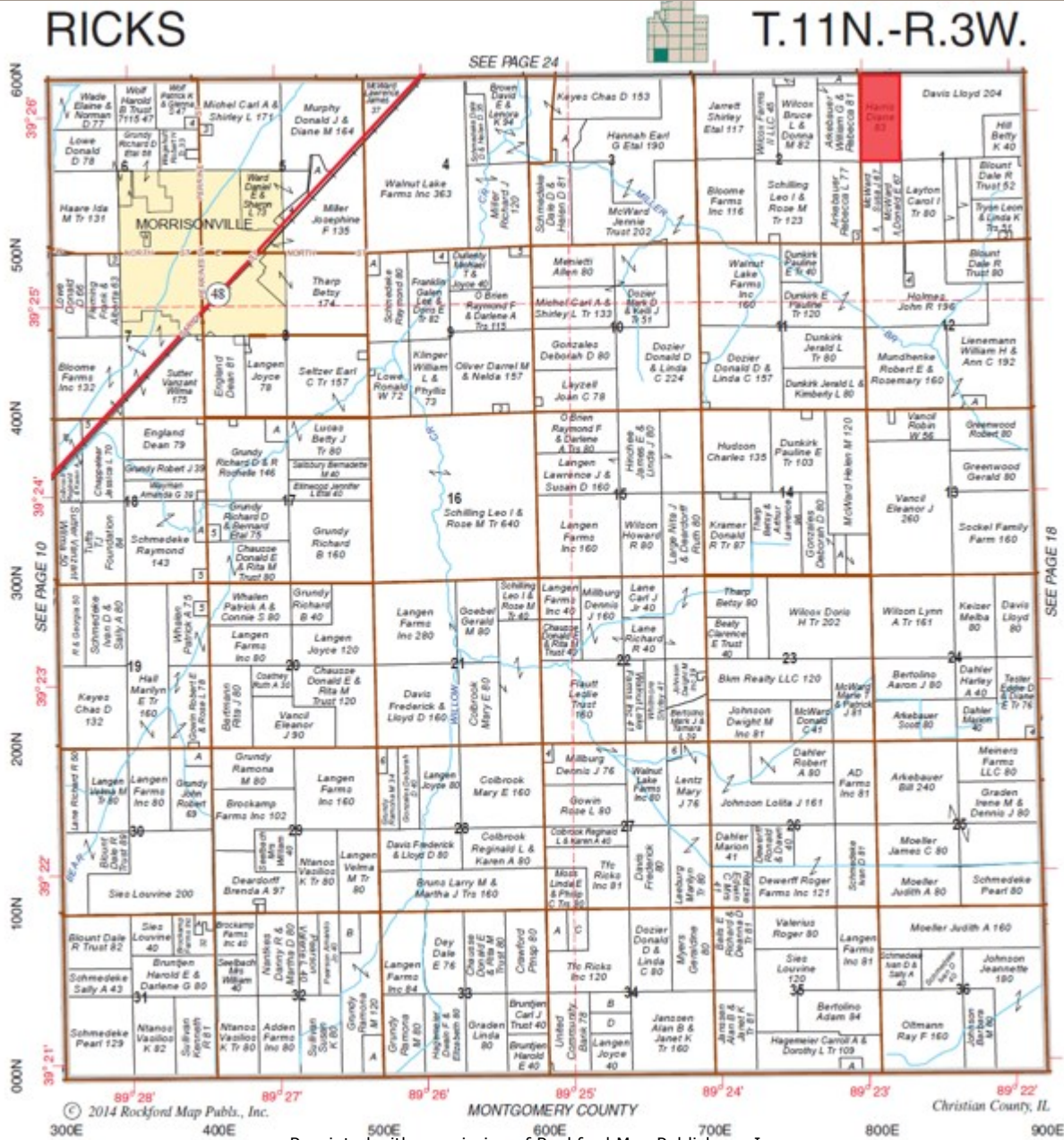
Farm Program:	ARC-County
---------------	------------

Real Estate Tax Information

Parcel ID #	Acres	2015 Assessed	2015 Taxes Payable
13-22-01-100-001-00	83.39	23,455	\$1,846.70

Farm for Sale

Plat Map



Reprinted with permission of Rockford Map Publishers, Inc.



Licensed Real Estate Broker Corporation

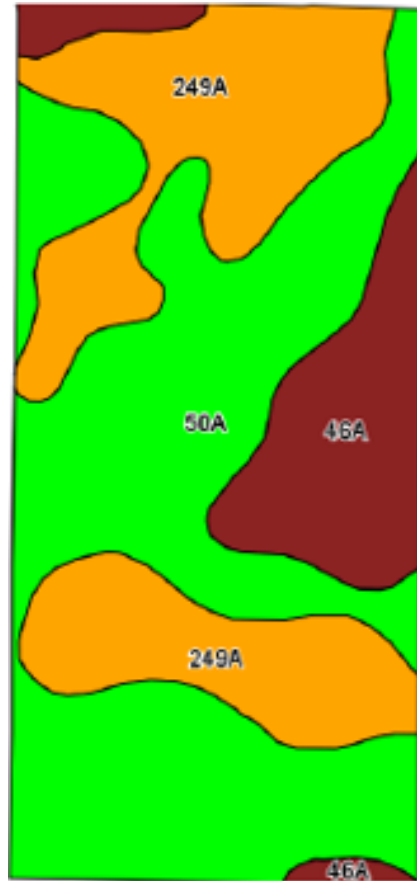
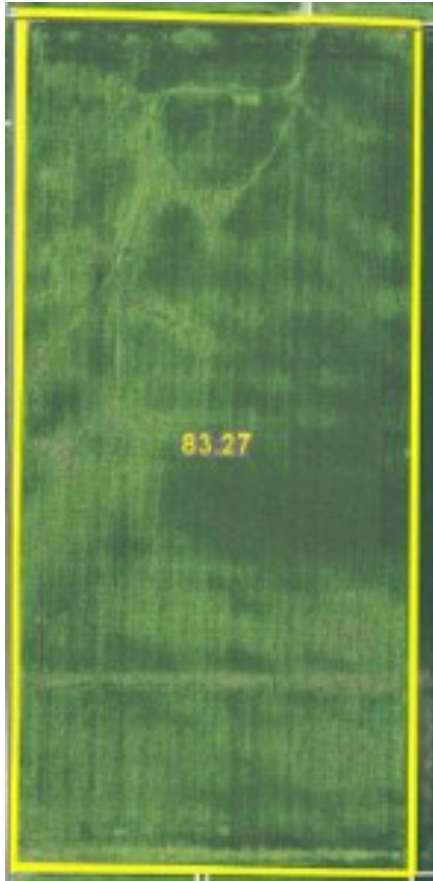
Dean Kyburz, Managing Broker
Nick Suess, Listing Broker
Tom Courson, Listing Broker
Kyle Ogden, Broker
Corey Zelhart, Broker

Phone 217-425-8290
Phone 217-425-8296
Phone 217-425-8291
Phone 217-425-8279
Phone 217-425-8245

Disclaimer: The information contained in this brochure is considered accurate. It is subject to verification and no liability for errors or omissions is assumed. There are no warranties, expressed or implied, as to the information herein contained, and it is recommended that an independent inspection of the property be made by all buyers.
Agency: Busey Farm Brokerage, a division of Busey Bank, its agents and representatives, are agents of the Seller

Farm for Sale

Aerial Map and Soil Information



Soil Code	Soil Description	Acres	Percent of Tillable	Corn Bu/A	Soybean Bu/A	Crop Productivity Index for optimum management
50A	Virden silty clay loam	43.82	52.6%	182	59	135
249A	Edinburg silty clay loam	26.33	31.6%	172	55	127
46A	Herrick silt loam	13.12	15.8%	181	58	133
Weighted Average		83.27		178.7	57.9	132.2



Licensed Real Estate Broker Corporation

Dean Kyburz, Managing/Listing Broker
Tom Courson, Broker
Kyle Ogden, Broker
Corey Zelhart, Broker
Nick Suess, Broker

Phone 217-425-8290
Phone 217-425-8291
Phone 217-425-8279
Phone 217-425-8245
Phone 217-425-8296

Disclaimer: The information contained in this brochure is considered accurate. It is subject to verification and no liability for errors or omissions is assumed. There are no warranties, expressed or implied, as to the information herein contained, and it is recommended that an independent inspection of the property be made by all buyers.
Agency: Busey Farm Brokerage, a division of Busey Bank, its agents and representatives, are agents of the Seller