

# Farm for Sale

Busey Farm Brokerage



## Farm for Sale

### Hampton Farm—Logan County 93.66 Acres in Laenna Township

#### Location

This farm is located southwest of Latham, IL on County Road 300 North.

#### Legal Description (abbreviated)

93 acres in the SE 1/4 of Section 35, Township 18N, Range 1W, in Laenna Twp, Logan County, Illinois

#### Listing Price

93.66 acres x \$10,900/acre = \$1,020,894.00

#### Lease/Possession

Lease will be open for 2018.

#### Contact Information



Steve Myers, Managing Broker 217-425-8340  
Tom Courson, Listing Broker 217-425-8291  
Kyle Ogden, Broker 217-425-8279  
Dean Kyburz, Broker 217-425-8290  
Corey Zelhart, Broker 217-425-4245  
Nick Suess, Broker 217-425-8296

[busey.com](http://busey.com)

259 E. South Park—Decatur, IL 62523  
Phone: 217-425-8340—Fax 217-362-2724

#### County FSA Data

Farm #	440	Tract #	1293
Total Acres:	93.66	Cropland Acres:	90.05
Corn Base Acres:	58.3	Soybean Base Acres:	31.8
Farm Program:	ARC-County		

#### Price Loss Coverage (PLC) Yields

Corn Yield:	140	Soybean Yield:	41
-------------	-----	----------------	----

#### Real Estate Tax Information

Parcel ID #	Acres	2016 Assessed Value	2016 Taxes Payable 2017
02-035-023-00	93.66	51,360	\$4,028.72

#### Soil Test Results

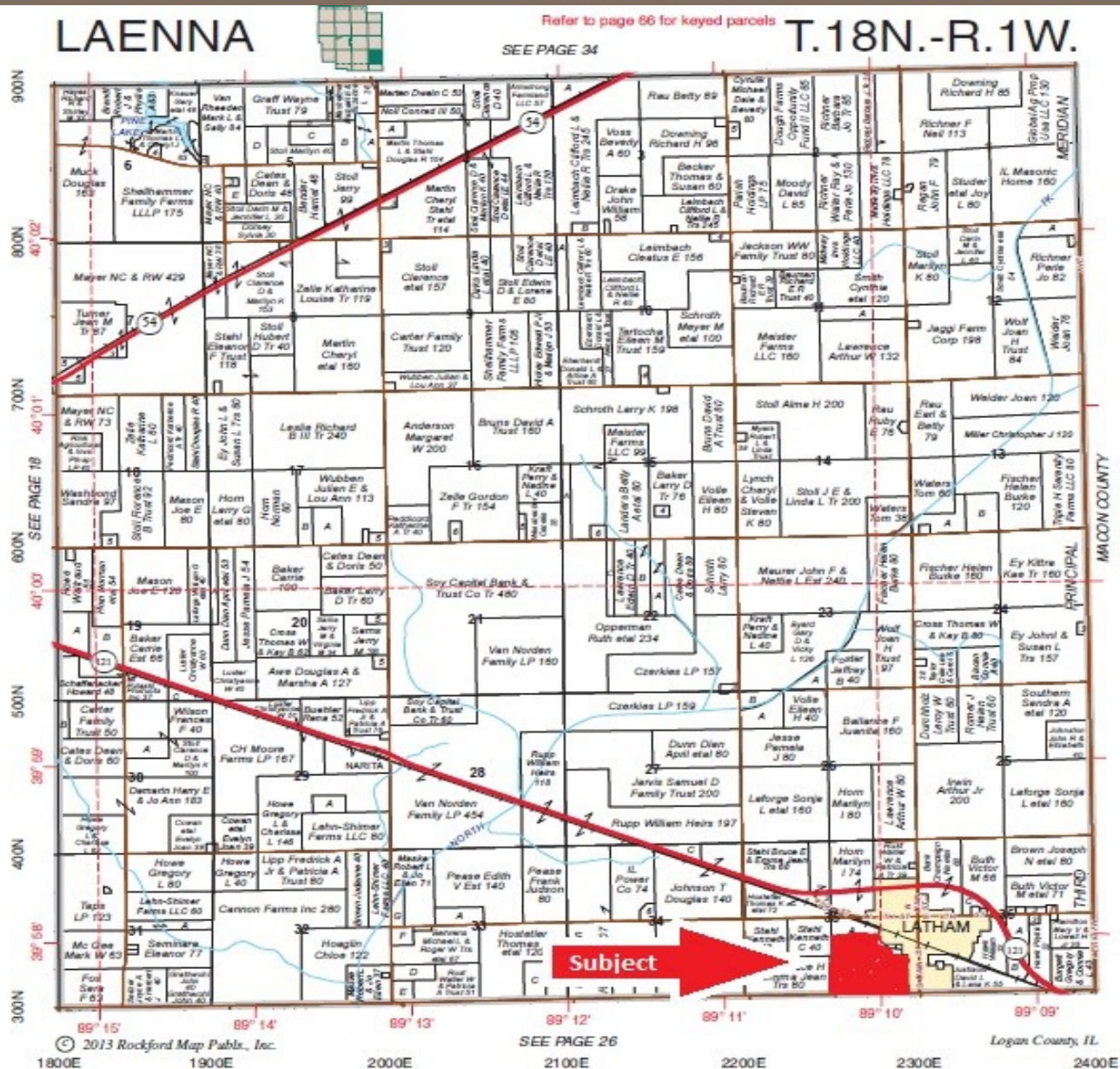
2016 KSI Soil Laboratories: Soil Test Results

pH: 5.7      P: 42      K: 347      Organic: 3.4

**Disclaimer:** The information contained in this brochure is considered accurate. It is subject to verification and no liability for errors or omissions is assumed. There are no warranties, expressed or implied, as to the information herein contained, and it is recommended that an independent inspection of the property be made by all buyers.  
**Agency:** Busey Farm Brokerage, a division of Busey Bank, its agents and representatives, are agents of the Seller

# Farm for Sale

## Plat Map



Reprinted with permission of Rockford Map Publishers, Inc.

**Busey** FARM  
BROKERAGE

Licensed Real Estate Broker Corporation

**Steve Myers, Managing Broker**  
**Tom Courson, Listing Broker**  
**Kyle Ogden, Broker**  
**Dean Kyburz, Broker**  
**Corey Zelhart, Broker**  
**Nick Suess, Broker**

**Phone 217-425-8340**  
**Phone 217-425-8291**  
**Phone 217-425-8279**  
**Phone 217-425-8290**  
**Phone 217-425-8245**  
**Phone 217-425-8296**

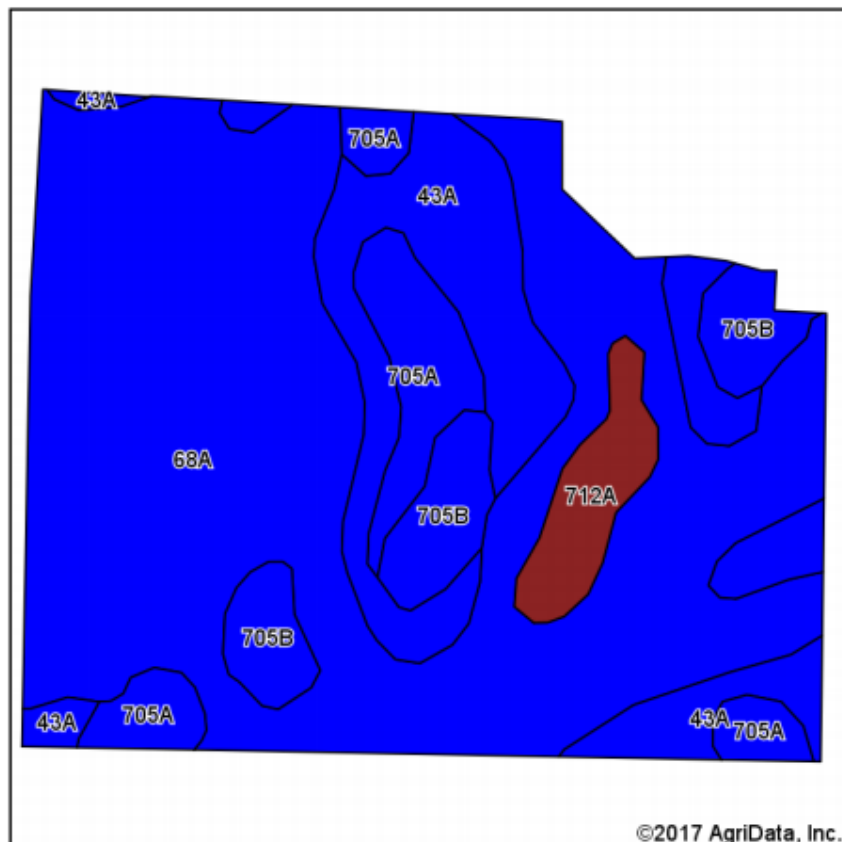
**Disclaimer:** The information contained in this brochure is considered accurate. It is subject to verification and no liability for errors or omissions is assumed. There are no warranties, expressed or implied, as to the information herein contained, and it is recommended that an independent inspection of the property be made by all buyers.  
**Agency:** Busey Farm Brokerage, a division of Busey Bank, its agents and representatives, are agents of the Seller



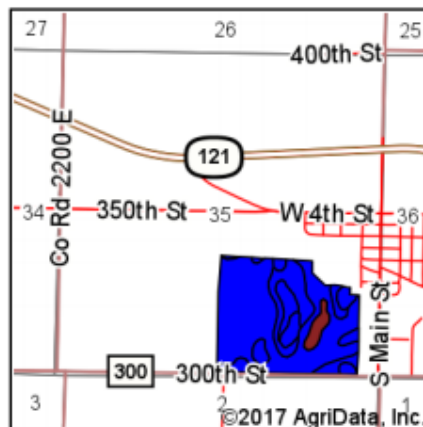
# Farm for Sale

## Aerial Map and Soil Information

### Soils Map



Soils data provided by USDA and NRCS.



State: **Illinois**  
 County: **Logan**  
 Location: **35-18N-1W**  
 Township: **Laenna**  
 Acres: **90.05**  
 Date: **7/10/2017**

**Busey** AG SERVICES

Maps Provided By:  
**surety**  
 CUSTOMIZED ONLINE MAPPING  
 © AgriData, Inc. 2017 www.AgriDataInc.com



Area Symbol: IL107, Soil Area Version: 11

Code	Soil Description	Acres	Percent of field	Il. State Productivity Index Legend	Corn Bu/A	Soybeans Bu/A	Crop productivity index for optimum management
68A	Sable silty clay loam, 0 to 2 percent slopes	57.02	63.3%		192	63	143
43A	Ipava silt loam, 0 to 2 percent slopes	16.57	18.4%		191	62	142
705A	Buckhart silt loam, 0 to 2 percent slopes	6.93	7.7%		190	61	142
**705B	Buckhart silt loam, 2 to 5 percent slopes	6.23	6.9%		**188	**60	**141
712A	Spaulding silty clay loam, 0 to 2 percent slopes	3.30	3.7%		183	58	134
Weighted Average					191.1	62.3	142.3

Table: Optimum Crop Productivity Ratings for Illinois Soil by K.R. Olson and J.M. Lang, Office of Research, ACES, University of Illinois at Champaign-Urbana. Version: 1/2/2012 Amended Table S2 B811

**Busey** FARM BROKERAGE

Licensed Real Estate Broker Corporation

**Steve Myers, Managing Broker**  
**Tom Courson, Listing Broker**  
**Kyle Ogden, Broker**  
**Dean Kyburz, Broker**  
**Corey Zelhart, Broker**  
**Nick Suess, Broker**

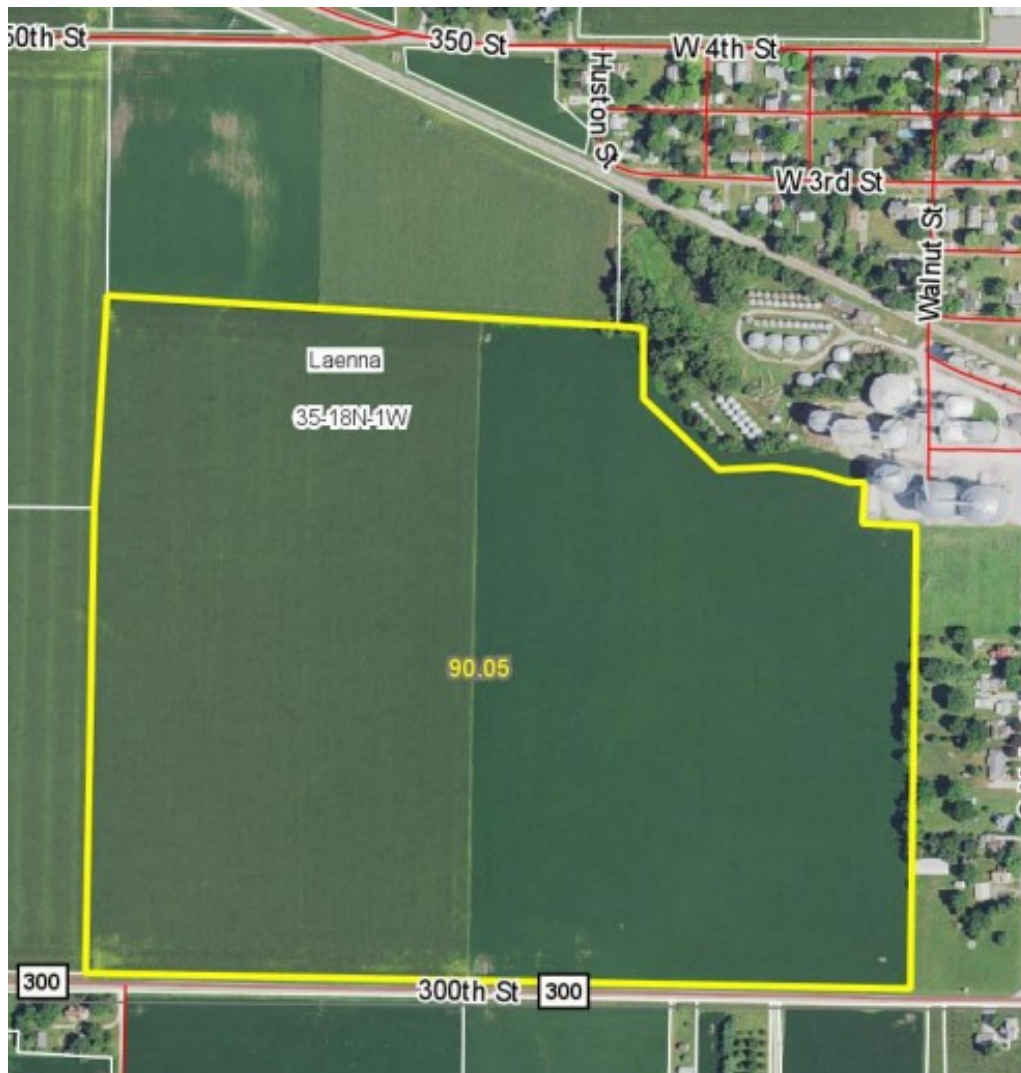
**Phone 217-425-8340**  
**Phone 217-425-8291**  
**Phone 217-425-8279**  
**Phone 217-425-8290**  
**Phone 217-425-8245**  
**Phone 217-425-8296**

**Disclaimer:** The information contained in this brochure is considered accurate. It is subject to verification and no liability for errors or omissions is assumed. There are no warranties, expressed or implied, as to the information herein contained, and it is recommended that an independent inspection of the property be made by all buyers.  
**Agency:** Busey Farm Brokerage, a division of Busey Bank, its agents and representatives, are agents of the Seller

# Farm for Sale

Aerial Map and Soil Information

## Aerial Map



**Busey** FARM  
BROKERAGE

Licensed Real Estate Broker Corporation

**Steve Myers, Managing Broker**  
**Tom Courson, Listing Broker**  
**Kyle Ogden, Broker**  
**Dean Kyburz, Broker**  
**Corey Zelhart, Broker**  
**Nick Suess, Broker**

**Phone 217-425-8340**  
**Phone 217-425-8291**  
**Phone 217-425-8279**  
**Phone 217-425-8290**  
**Phone 217-425-8245**  
**Phone 217-425-8296**

**Disclaimer:** The information contained in this brochure is considered accurate. It is subject to verification and no liability for errors or omissions is assumed. There are no warranties, expressed or implied, as to the information herein contained, and it is recommended that an independent inspection of the property be made by all buyers.  
**Agency:** Busey Farm Brokerage, a division of Busey Bank, its agents and representatives, are agents of the Seller