

Farm for Sale

Busey Farm Brokerage

SOLD!

Farm for Sale

Harris Trust North Farm 40 tax acres

Location

This farm is located approximately 3.5 miles East of Edinburg, IL.

Legal Description

The Southeast quarter of the Northeast quarter of Section 21, Township 14 North, Range 2 West of the Third Principal Meridian (3PM), Christian County, Illinois.

Lease/Possession

The lease is open for 2017, possession at closing.

Contact Information



Dean Kyburz, Managing Broker 217-425-8290
Nick Suess, Listing Broker 217-425-8296
Tom Courson, Listing Broker 217-425-8291
Kyle Ogden, Broker 217-425-8279
Corey Zelhart, Broker 217-425-4245

busey.com

259 E. South Park—Decatur, IL 62523
Phone: 217-425-8340—Fax 217-362-2724

Listing Price

40 acres x \$11,750/acre = \$470,000.00

County FSA Data

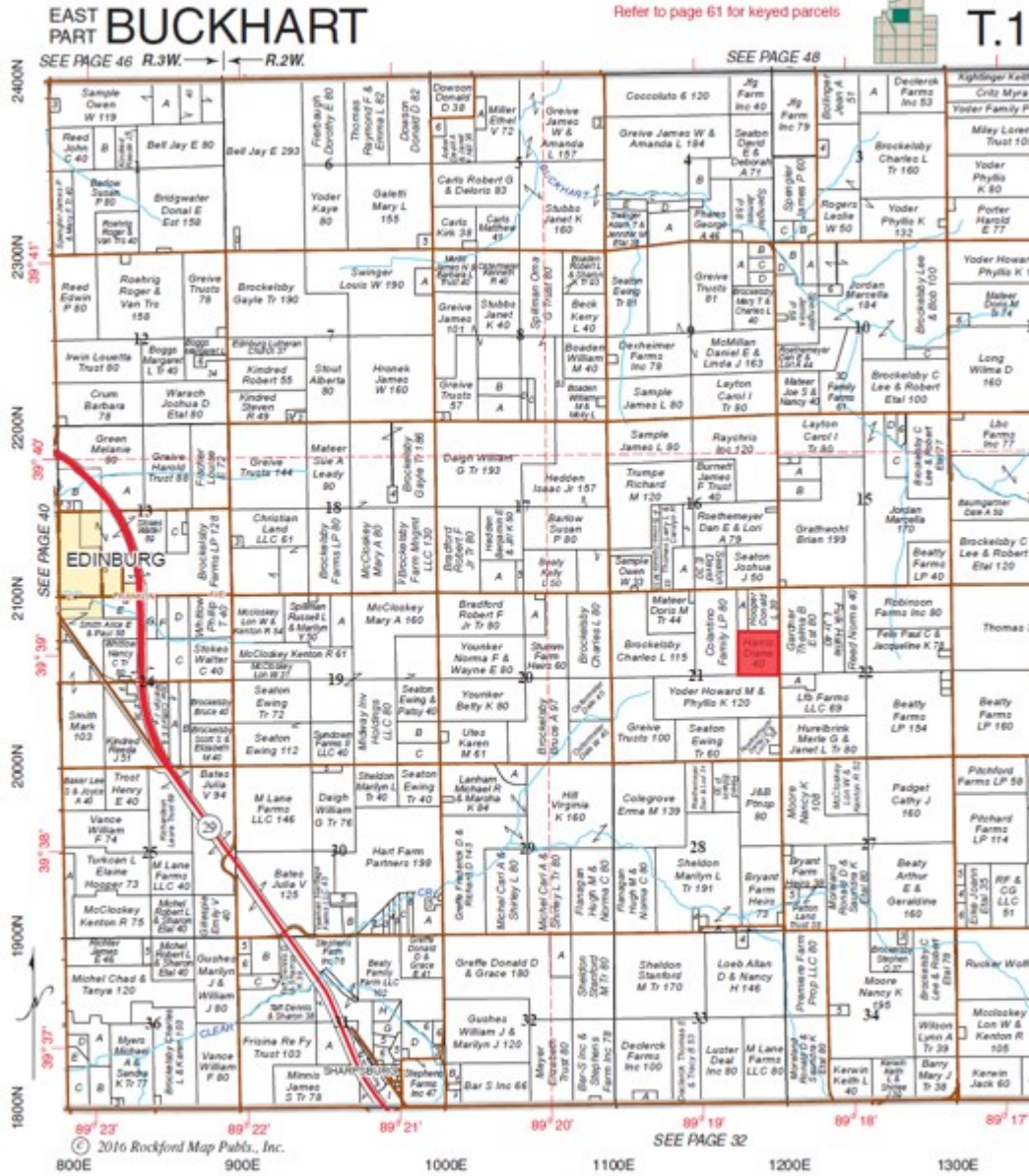
Farm #	472	Tract #	86
Total Acres:	40	Cropland Acres:	39.95
Corn Base Acres:	19.61	Soybean Base Acres:	19.39
Farm Program:	ARC-County		

Real Estate Tax Information

Parcel ID #	Acres	2015 Assessed Value	2015 Taxes Payable 2016
03-08-21-200-004-00	40	14,253	\$869.36

Farm for Sale

Plat Map



Reprinted with permission of Rockford Map Publishers, Inc.



Licensed Real Estate Broker Corporation

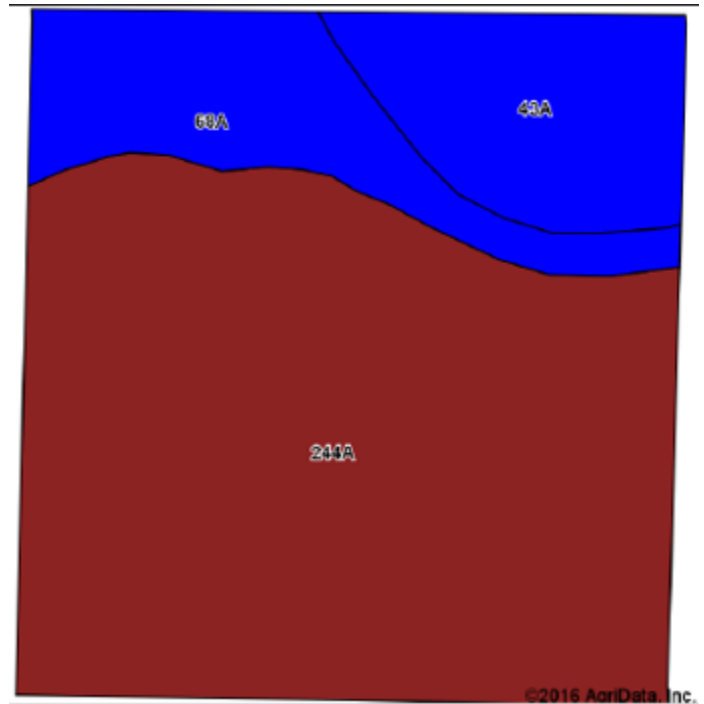
Dean Kyburz, Managing Broker
Nick Suess, Listing Broker
Tom Courson, Listing Broker
Kyle Ogden, Broker
Corey Zelhart, Broker

Phone 217-425-8290
Phone 217-425-8296
Phone 217-425-8291
Phone 217-425-8279
Phone 217-425-8245

Disclaimer: The information contained in this brochure is considered accurate. It is subject to verification and no liability for errors or omissions is assumed. There are no warranties, expressed or implied, as to the information herein contained, and it is recommended that an independent inspection of the property be made by all buyers.
Agency: Busey Farm Brokerage, a division of Busey Bank, its agents and representatives, are agents of the Seller

Farm for Sale

Aerial Map and Soil Information



Soil Code	Soil Description	Acres	Percent of Tillable	Corn Bu/A	Soybean Bu/A	Crop Productivity Index for optimum management
244A	Hartsburg silty clay loam	27.88	71.3%	182	59	134
68A	Sable silty clay loam	5.65	15.0%	192	63	143
43A	Ipava silt loam	5.37	13.7%	191	62	142
Weighted Average				184.7	60	136.4



Licensed Real Estate Broker Corporation

Dean Kyburz, Managing Broker
Nick Suess, Listing Broker
Tom Courson, Listing Broker
Kyle Ogden, Broker
Corey Zelhart, Broker

Phone 217-425-8290
Phone 217-425-8296
Phone 217-425-8291
Phone 217-425-8279
Phone 217-425-8245

Disclaimer: The information contained in this brochure is considered accurate. It is subject to verification and no liability for errors or omissions is assumed. There are no warranties, expressed or implied, as to the information herein contained, and it is recommended that an independent inspection of the property be made by all buyers.
Agency: Busey Farm Brokerage, a division of Busey Bank, its agents and representatives, are agents of the Seller