

Farm for Sale

Busey Farm Brokerage



GRUNDY COUNTY – FARM FOR SALE

Dough Farms Opportunity Fund I

132.38 Surveyed Acres

Garfield Township, Grundy County, Illinois

Location

The DFOF I Garfield Twp. Farm is located approx. 1 mile Southwest of Gardner, Illinois along I-55. The farm is accessed by Township Road 4000 E on the West which and is ½ mile S of Road 7000 S (CR 29)

Legal Description

(Abbreviated)

The South 89.94 acres of the SW ¼, except the building site of 4.0 +/- acres and everything lying North of Interstate 55 in the SE ¼ of Section 8, T31N, R8E of Garfield Twp. Grundy County, Illinois.

Listing Price

132.38 Acres at \$9,750.00/A = \$1,290,705.00

Contact Information



LeRoy

Steve Myers
309-962-2901
309-275-4402

Champaign

Matt Rhodes
217-351-6555
217-255-2018

Decatur

Tom Courson
217-425-8291
217-855-3026

Managing Broker: Dean Kyburz

Busey.com

301 E Cedar St LeRoy, IL 61752
Phone: 309-962-2901 Fax: 309-962-6026

Grundy County FSA Data

Farm #	4383	Tract #	1050
Total Acres:	132.41	Tillable Acres:	123.13
Corn Base Acres:	65.3	Soybean Base Acres:	57.8
HEL/Wetlands:	Wetland	Program:	ARC-CO

PLC Payment Yields

Corn Yield:	120	Soybean Yield:	36
-------------	-----	----------------	----

Real Estate Tax Information

Parcel ID	Acres	2015 Assessed Value	2015 Taxes Payable 2016
12-08-300-009	87.73	\$22,056	\$1,812.42
12-08-400-001	37.89	\$5,243	\$430.84
Total	125.62	\$27,299	\$2,243.26

Soil Test Results

USI 2014	pH: 6.1	P1: 18	K: 304	OM: 3.2
----------	---------	--------	--------	---------

Lease/Possession

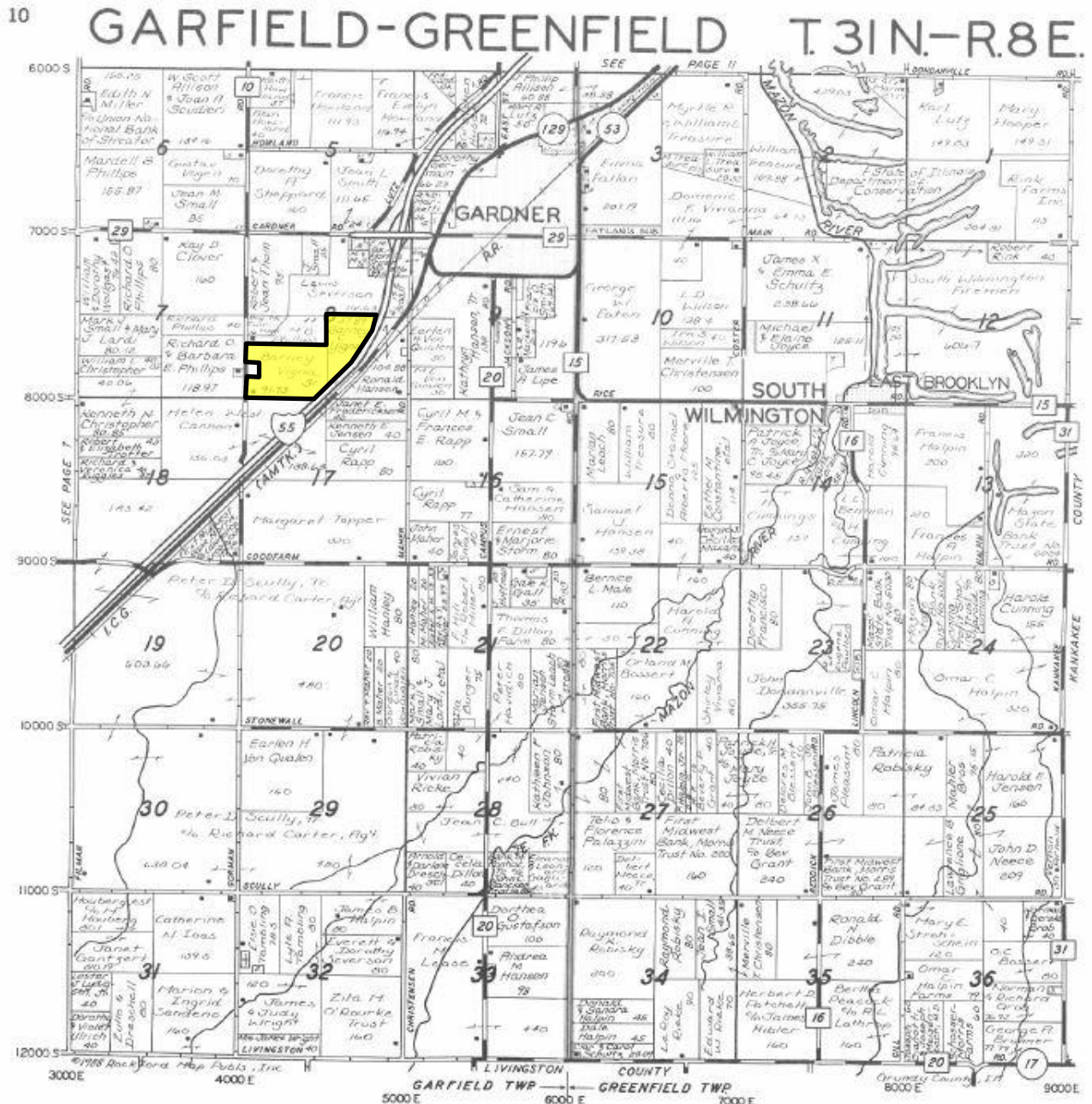
The farm is leased for the 2016 crop year on a cash rent basis.

Yield History

	Corn	SB
2016	X	58.0
2015	119	X
2014	X	52.1
2013	156	X
2012	X	X

Disclaimer: The information contained in this brochure is considered accurate. It is subject to verification and no liability for errors or omissions is assumed. There are no warranties, expressed or implied, as to the information herein contained, and it is recommended that an independent inspection of the property be made by all buyers.

Agency: Busey Farm Brokerage, a division of Busey Bank, its agents and representatives, are agents of the Seller



Reprinted with permission of Rockford Map Publishers, Inc.



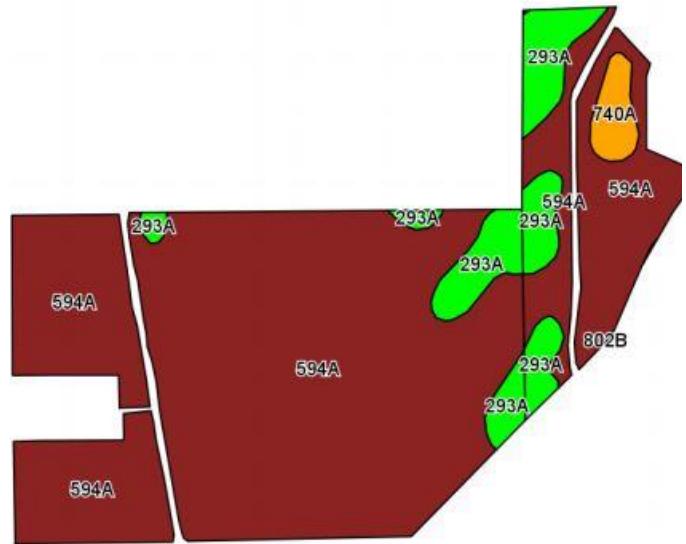
Licensed Real Estate Broker Corporation
Busey Farm Brokerage

Phone: 309-962-2901
Fax: 309-962-6026

Disclaimer: The information contained in this brochure is considered accurate. It is subject to verification and no liability for errors or omissions is assumed. There are no warranties, expressed or implied, as to the information herein contained, and it is recommended that an independent inspection of the property be made by all buyers.

Agency: Busey Farm Brokerage, a division of Busey Bank, its agents and representatives, are agents of the Seller

Aerial Map and Soil Information



Soil Code	Soil Description	Approximate Acres	Percent of Field	Corn Bu/A	Soy Bu/A	Crop Productivity Index for optimum management
594A	Reddick	100.03	87.5%	177	56	130
293A	Andres	12.10	9.8%	184	59	135
740A	Darroch	2.20	1.8%	177	57	129
Weighted Average				177.7	56.3	130.5



Licensed Real Estate Broker Corporation
Managing Broker: Dean Kyburz

Steve Myers

Phone: 309-962-2901

Cell: 309-275-4402

steve.myers@busey.com

Matt Rhodes

Phone: 217-351-6555

Cell: 217-255-2018

matt.rhodes@busey.com

Tom Courson

Phone: 217-425-8291

Cell: 217-855-3026

tom.courson@busey.com

Disclaimer: The information contained in this brochure is considered accurate. It is subject to verification and no liability for errors or omissions is assumed. There are no warranties, expressed or implied, as to the information herein contained, and it is recommended that an independent inspection of the property be made by all buyers.

Agency: Busey Farm Brokerage, a division of Busey Bank, its agents and representatives, are agents of the Seller