

# Farm for Sale

Busey Farm Brokerage and Farmers National Company



## FORD COUNTY – FARM FOR SALE

### Stanhope Foster Trust #2 Farm & Helen Foster Kelly Trust Farm

836.19 +/- Acres

North part of Drummer Township, Ford County, Illinois

#### Listing Price

\$8,000,000.00

#### Lease/Possession

The farm is lease free for the 2017 crop year

#### Real Estate Tax Information

Parcel ID#	Acres	2015 Assessed Value	2015 Taxes Payable 2016
09-08-35-300-001	44.78	\$9,180.00	\$846.00
09-08-34-300-001	160.00	\$67,250.00	\$6,197.50
09-11-03-100-001	252.08	\$120,720.00	\$11,125.10
09-08-34-100-001	379.33	\$170,820.00	\$15,742.12

#### Yield History

	Corn	Beans
2016	243.54	70.18
2015	241.98	71.04
2014	251.03	66.72
2013	201.64	51.66

#### Ford County FSA Data

Farm #	467	Tract #	302
Total Acres:	843.06	DCP Cropland Acres:	734.12
Corn Base Acres:	356.70	Bean Base Acres:	356.70
HEL/Wetlands:	N/A	Program:	ARC-CO

#### PLC Payment Yields

Corn Yield:	151	Soybean Yield:	45
-------------	-----	----------------	----



#### Steve Myers

Broker

Office: (309) 962-2901

Cell: (309) 275-4402

#### Daniel Herriott

Broker

Office: (217) 351-2757

Cell: (217) 722-5979



#### Patrick Gooding

Broker

Office: (217) 607-0118

Cell: (217) 369-6335

[Busey.com](http://Busey.com)

[FarmersNational.com](http://FarmersNational.com)

**Disclaimer:** The information contained in this brochure is considered accurate. It is subject to verification and no liability for errors or omissions is assumed. There are no warranties, expressed or implied, as to the information herein contained, and it is recommended that an independent inspection of the property be made by all buyers.

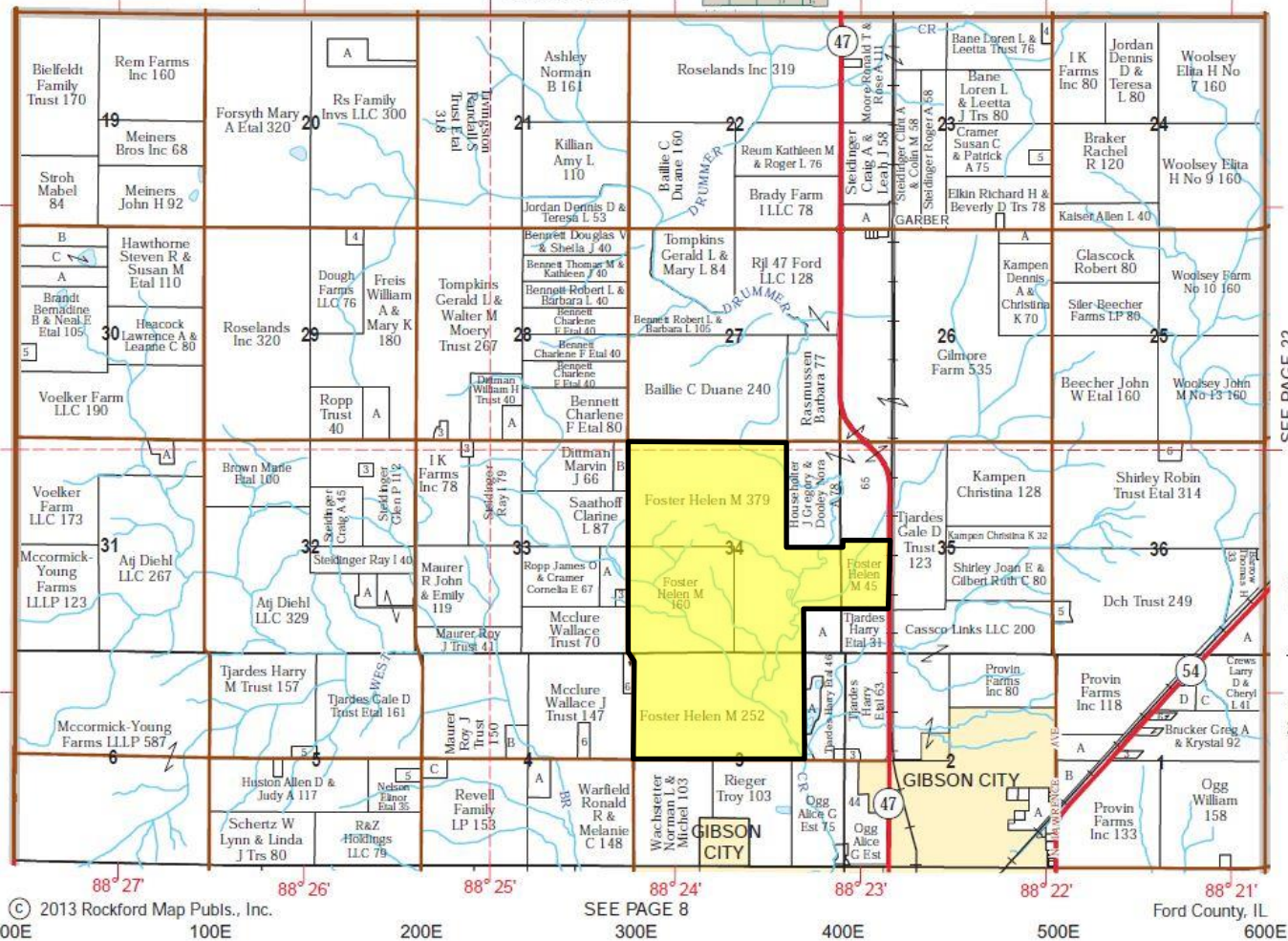
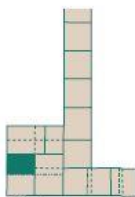
**Agency:** Farmers National Company & Busey Farm Brokerage, a division of Busey Bank, its agents and representatives, are agents of the Seller

NORTH PART DRUMMER

Refer to page 44 for keyed parcels

T.23-24N.-R.7E.

SEE PAGE 26



© 2013 Rockford Map Pubs., Inc.

SEE PAGE 8

Ford County, IL

Reprinted with permission of Rockford Map Publishers, Inc.



Steve Myers: Broker  
Cell: (309) 275-4402

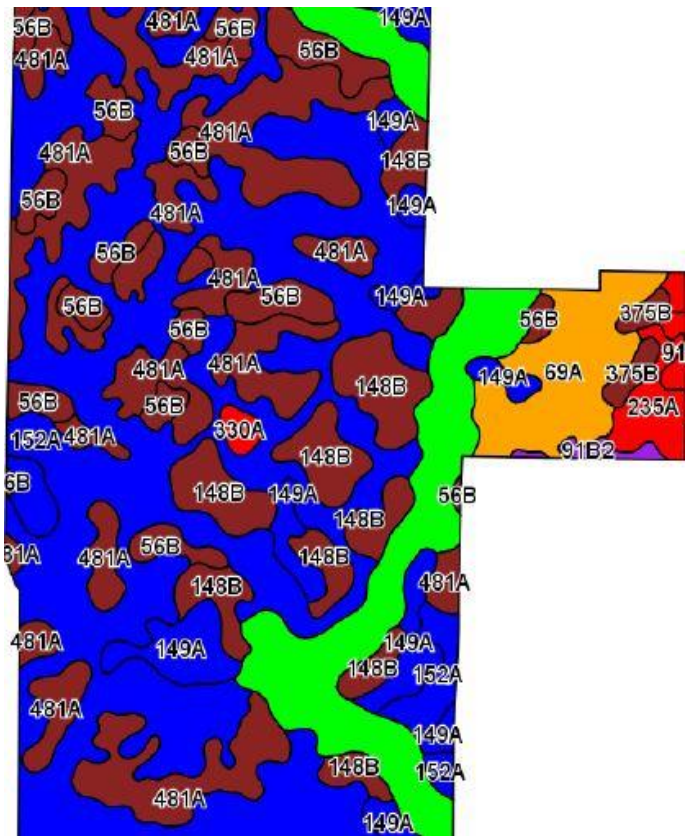
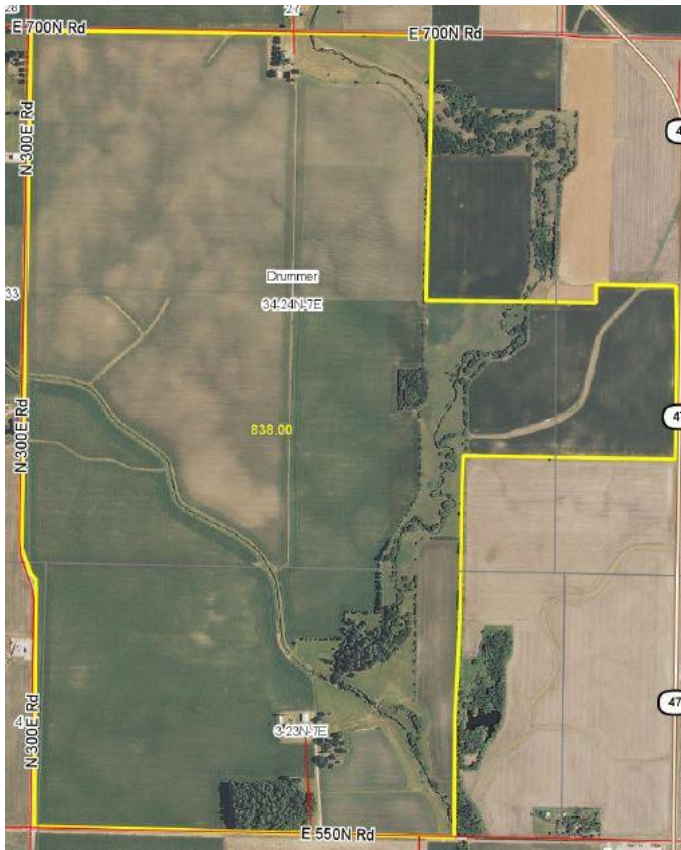
Patrick Gooding: Broker  
Cell: (217) 369-6335

Daniel Herriot: Broker  
Cell: (217) 722-5979

**Disclaimer:** The information contained in this brochure is considered accurate. It is subject to verification and no liability for errors or omissions is assumed. There are no warranties, expressed or implied, as to the information herein contained, and it is recommended that an independent inspection of the property be made by all buyers.

**Agency:** Farmers National Company & Busey Farm Brokerage, a division of Busey Bank, its agents and representatives, are agents of the Seller

# Soil Test Information, Aerial and Soil Map



Soil Code	Soil Description	Approximate Acres	Percent of Field	Corn Bu/A	Soy Bu/A	Crop Productivity Index for optimum management
152A	Drummer silty clay loam	340.99	40.70%	195	63	144
481A	Raub silt loam	158.50	18.90%	183	58	134
3107A	Sawmill silty clay loam	89.26	10.70%	189	60	139
148B	Proctor silt loam	73.71	8.80%	183	57	134
56B	Dana silt loam	57.95	6.90%	178	55	130
149A	Brenton silt loam	52.72	6.30%	195	60	141
69A	Milford silty clay loam	37.16	4.40%	171	57	128
235A	Bryce silty clay loam	12.96	1.50%	162	54	121
375B	Rutland silty clay loam	5.92	0.70%	178	57	132
91B2	Swygert silty clay loam	3.25	0.40%	147	48	110
330A	Peotone silty clay loam	2.96	0.40%	164	55	123
91A	Swygert silty clay loam	2.62	0.30%	158	52	118
<b>Weighted Average</b>				<b>187.8</b>	<b>59.9</b>	<b>138.1</b>

## Soil Test Results

Heritage FS 2013 (Half of farm)	pH: 6.2	P1: 86	K: 355	OM: 2.9
Heritage FS 2016 (Half of farm)	pH: 6.1	P1: 52	K: 255	OM: 3.0

**Disclaimer:** The information contained in this brochure is considered accurate. It is subject to verification and no liability for errors or omissions is assumed. There are no warranties, expressed or implied, as to the information herein contained, and it is recommended that an independent inspection of the property be made by all buyers.

**Agency:** Farmers National Company & Busey Farm Brokerage, a division of Busey Bank, its agents and representatives, are agents of the Seller